



# Linking Glycoscience and health longevity

**MARUKYOU BIO FOODS Co.**

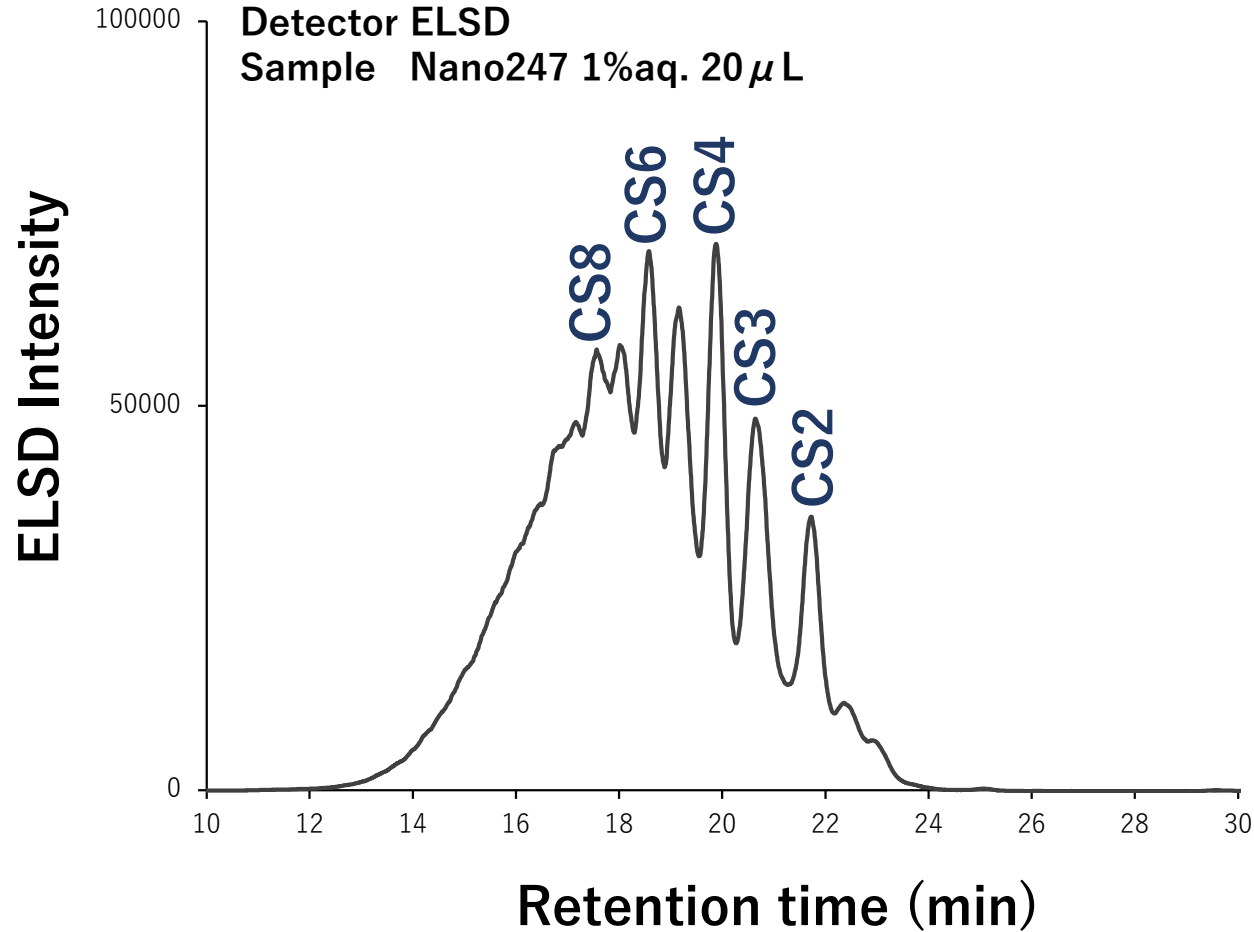
# Nano247

## Products Analysis Data

# Nano247 (Lot#250130)

## Molecular weight measurement by HPLC

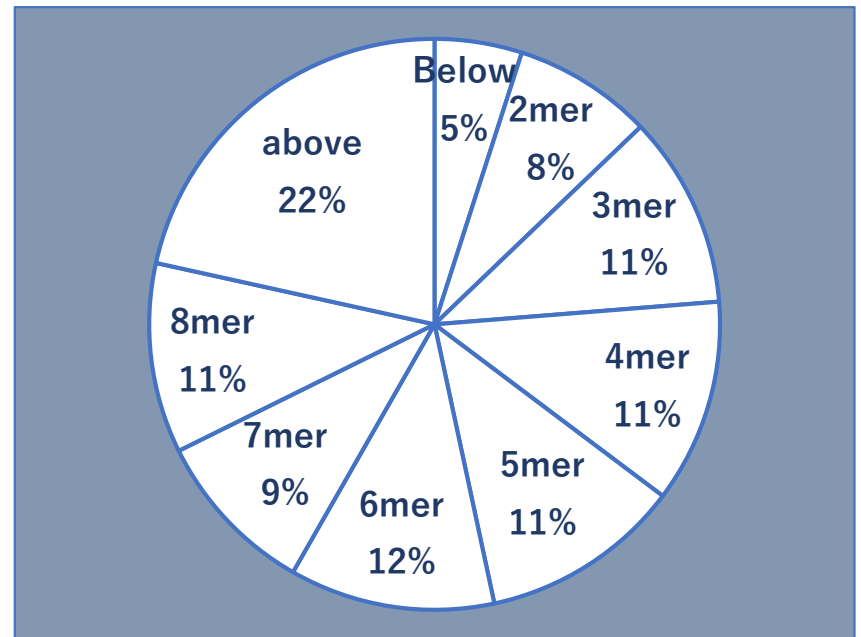
Column Superdex 75 Increase  
Detector ELSD  
Sample Nano247 1%aq. 20  $\mu$ L



## 【Quality Control Analysis】

item	#250130
Moisture content	7.3%
pH	3.71
Purity	91.0%
molecular weight (Mw)	1806

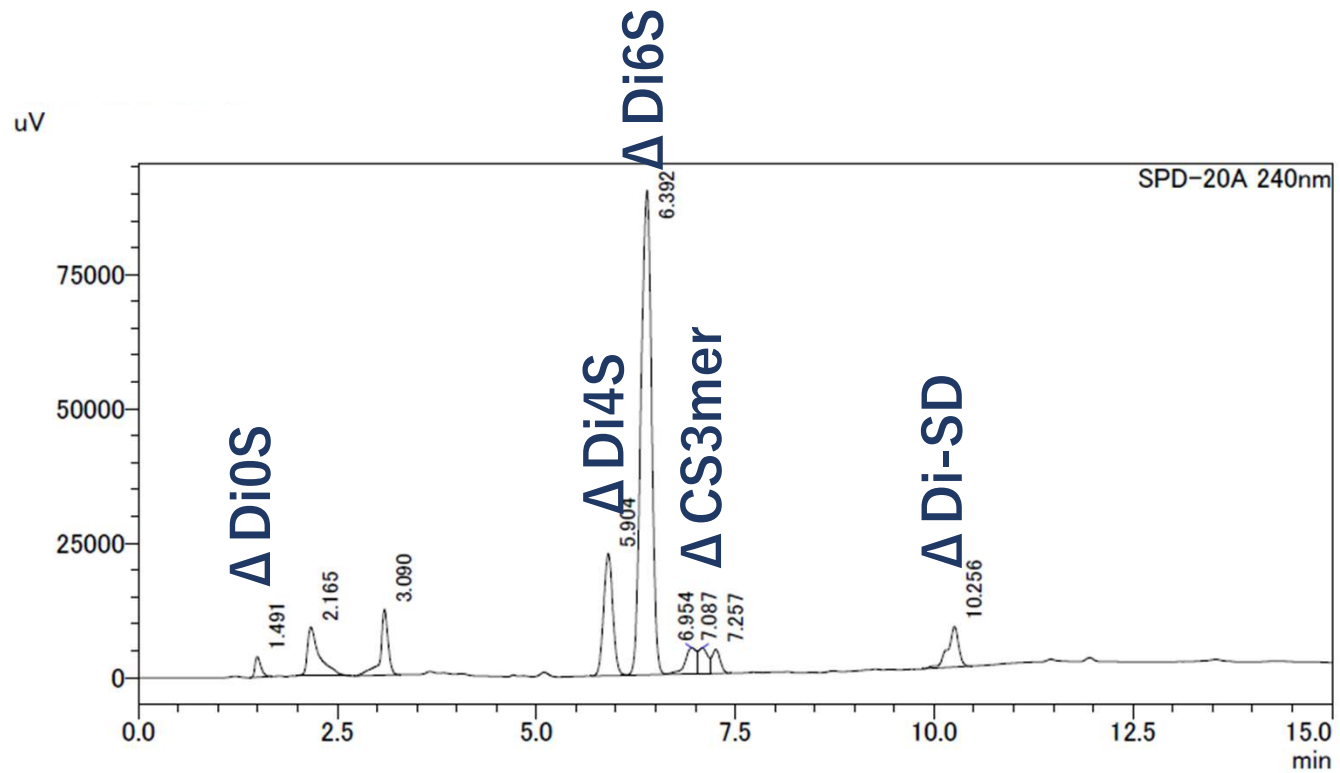
## 【Composition】



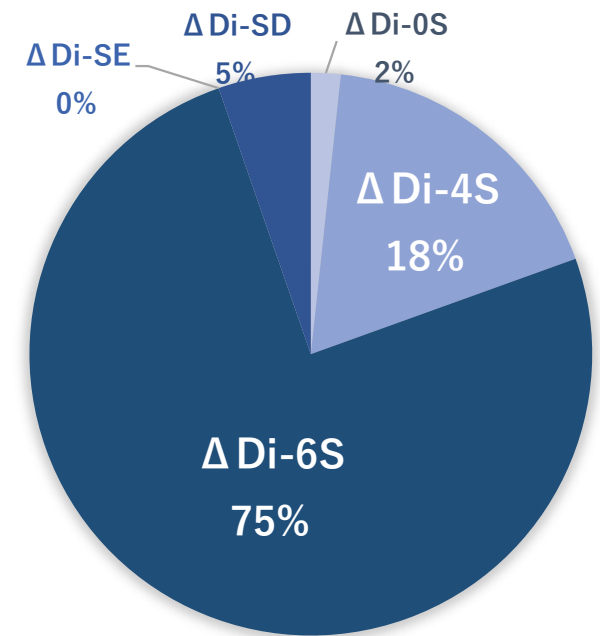
# Nano247(Lot#250130)

## Disaccharide analysis

Column Synergi-Polar-RP  
Detect UV240nm  
Sample Nano247 CSaseABC digestive fluids



## 【Disaccharide Composition】



## CONTACT US

# MARUKYOU BIO FOODS Co., Ltd.

## Fine Chemical Laboratory

---

Research and Product Development in Glycan Functionality

2-1-40 Nishimiyanosawa, 4-jo Teine-ku, Sapporo,  
Hokkaido, JAPAN  
TEL 011-676-5702

URL <https://mbf-net.com>  
<https://nanomedica.jp>  
<https://nano10-9.jp>

Mail [finechemical@mbf-net.com](mailto:finechemical@mbf-net.com)